

Automated Forensic Data Analysis

- The Task
- TrueAllele Automation
- Latest Technology
- System Support



Data Generation

- High Throughput**
- millions per year
- High Quality**
- no error
 - find artifacts



Data Scoring: Labor Cost

> \$1.00 per experiment

LaborCost			
	A	B	C
20	PEOPLE COST	\$1,024,000	
21	PER GENOTYPE	\$1.02	
22			
23	2.4 Breakdown	per person	per day per year
24	salary	\$25,000	throughput
25	benefits	\$8,250	runs
26	space	\$2,000	genotypes
27	computer	\$2,000	4,000 1,000,000
28	software	\$10,000	Scoring
29	management	\$5,250	calls/person
30	overhead	\$12,500	500 125,000
31	COST	\$64,000	PEOPLE
32			16
33			
34	Assumptions		Assumptions
35	benefit rate	0.25	genotypes/run
36	sq ft per person	100	days/year
37	calling time w	8.5	people/call
38	management rate	0.25	
39	overhead rate	0.50	
40			



TrueAllele™ Automation

Flexible automated analysis:
DNA fragment sizing and quantification


Any gel or capillary sequencer data

image analysis
signal analysis
allele assignment
quality assessment

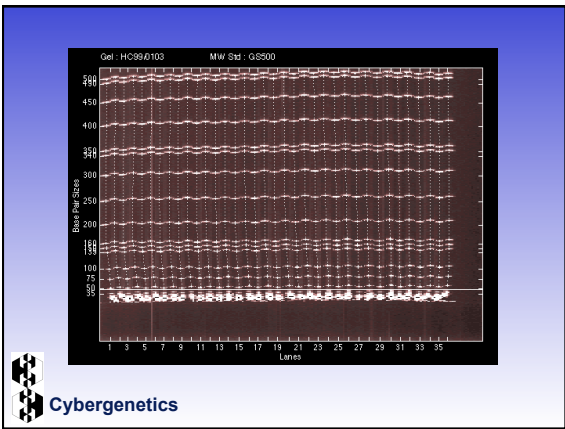
Automated Analysis:

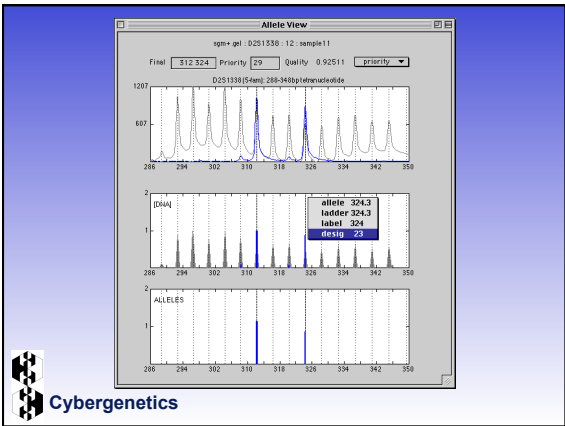
- Macintosh
- Windows
- UNIX

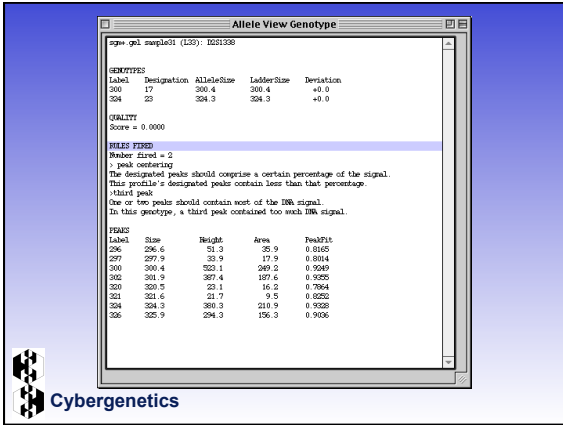
Focused user review of only the 5%-10% suspect data



Cybergenetics





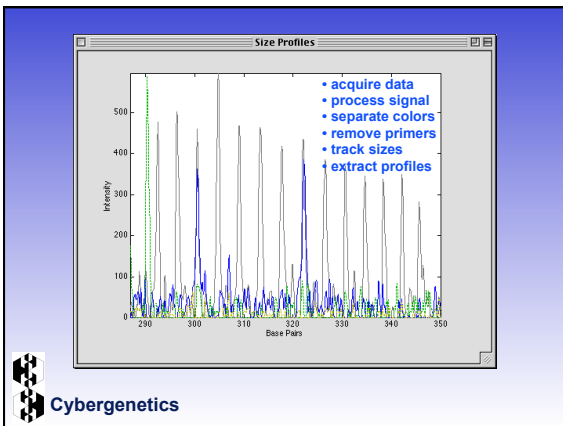


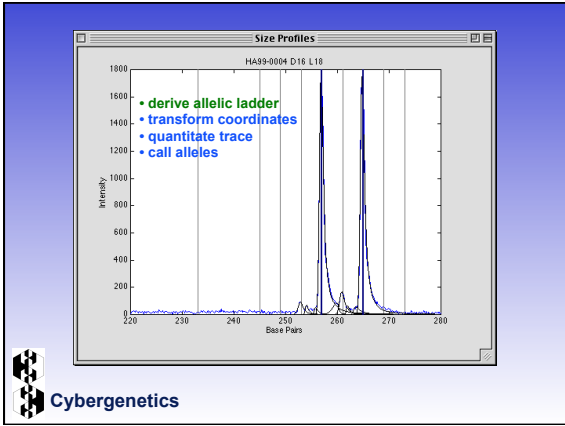
Latest Technology

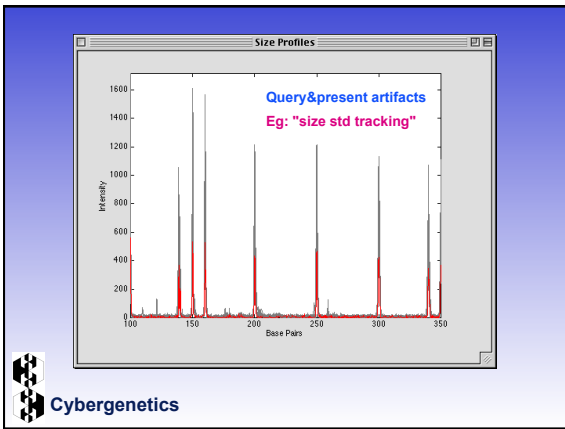
Jacob™ System

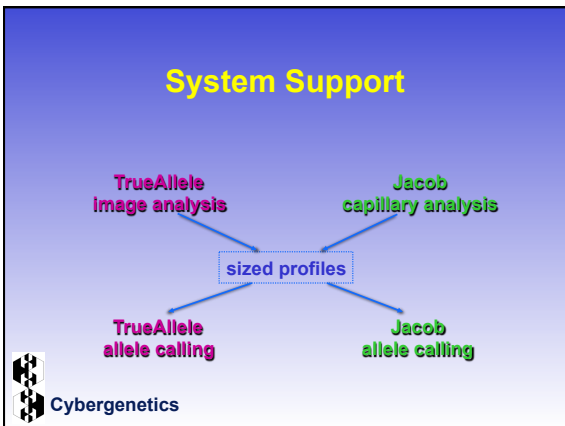
- Capillary signal processing
- Ladder-based allele calling
- Visual query interaction

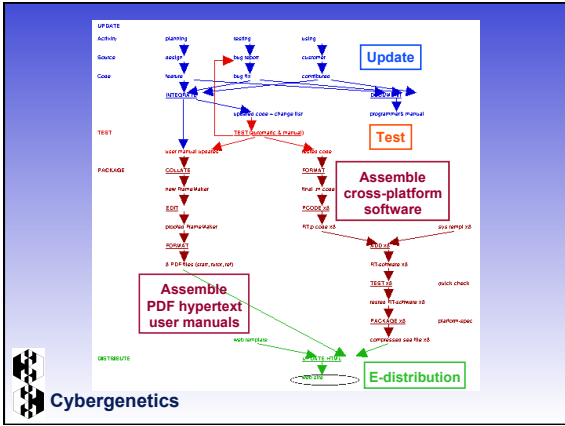
Cybergenetics











www.cybgen.com

Overview
Advantages
Approach
Spreadsheet
Patents
Publications

Company | Technology | Software | Support | News | Contact

cybergenetics

P A T E N T S

The TrueAllele technology is protected by multiple patents. Review the claims linked to the patents below to determine whether you need TrueAllele patent protection for your genetic processes or discoveries.

Patent	Issued	Title
US 5,541,067	Jul 1996	Method and system for genotyping
US 5,580,728	Dec 1996	Method and system for genotyping
US 5,876,933	Mar 1999	Method and system for genotyping

Cybergenetics

Automated DNA Profiling

STR Data Pathway

- Prepare Sample
- Amplify DNA
- Separate Sizes
- Designate Alleles
- Forensic Analysis

Cybergenetics
